



**Santa Barbara Cottage Hospital  
Multiple Trauma Critical Care  
Symposium Planning Committee**

**Stephen Kaminski, MD**  
Trauma Medical Director

**Denise McDonald, RN, MSN**  
Clinical Manager Emergency and Trauma Services

**Carol H. Nelson, RN, BSN, CDE**  
Director of Education

**Debbie Aitken, RN**  
Trauma Nurse Coordinator

**Diane Barkas, MSN, RN,  
ACNS-BC, CCRN**  
Clinical Nurse Specialist/Critical Care

**Greg Brunet, MPAS, PA-C**  
Orthopedic Trauma

**Sarah Linder, PA-C, MMS**  
Trauma Physician Assistant

**Rosalie Meijer, MMS, PA-C**  
Trauma Physician Assistant

**Brandon Oney**  
Trauma Registrar



**Symposium Contact Information**

Phone: 805-569-7451 • Fax: 805-569-7890

[www.cottagehealthsystem.org](http://www.cottagehealthsystem.org)

Cottage is a not-for-profit community organization  
dedicated to providing medical excellence close to home.

**Speakers**

**Dan Davis, MD, FACEP**  
Professor of Emergency Medicine  
UCSD School of Medicine

**Mark Eastham, MD, FACS**  
Neurosurgeon and Filmmaker  
San Jose, California

**Jeff Fried, MD, FACP, FCCM**  
Medical Director, Critical Care, CHS

**Nader Habashi, MD, FACP, FCCP**  
Medical Director, Multi Trauma Unit  
University of Maryland, Shock/Trauma

**Stephen Kaminski, MD, FACS**  
Medical Director, Trauma Services and SICU, CHS

**Rick Lehman, MD, FCP**  
Co-Director, Pediatric ICU, CHS

**Angelo Salvucci, MD, FACEP**  
Medical Director EMS, Ventura/Santa Barbara Counties

**Mike Sise, MD, FACS**  
Medical Director, Trauma Services, Scripps/Mercy  
Clinical Professor of Surgery, UCSD

**Dave Duncan, MD, FACEP**  
Medical Advisor, Cal Star & Cal Fire

**Mark Eckstein, MD, FACEP**  
Associate Professor of Emergency Medicine  
Director of Pre-Hospital Care, USC  
Medical Director, LA Fire Department

**DJ Green, MD, FACS**  
Assistant Professor of Surgery  
Director, Surgical Skills Center  
Keck/USC School of Medicine

**Mohammed Jaffar, MD, FCCM, FCCP**  
Associate Professor, Anesthesia & Surgery  
Medical Director, SICU, University of Arkansas

**Maggie Kadehmian, MD, FACS**  
Medical Director, Trauma and SICU  
Los Robles Hospital & Medical Center

**Javier Romero, MD, FACS**  
Medical Director, Trauma and SICU  
Ventura County Medical Center

**Jeff Sager, MD, FACP**  
Pulmonary and Critical Care, CHS

**David Spain, MD, FACS**  
Professor of Surgery, Medical Director Trauma & SICU  
Stanford University



SANTA BARBARA COTTAGE HOSPITAL  
TRAUMA SERVICES  
PO BOX 689  
SANTA BARBARA, CA 93102

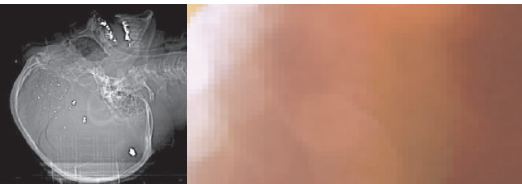
Santa Barbara Cottage Hospital  
presents the

**Multiple Trauma  
Critical Care  
Symposium**

*Critical Care Concepts in Trauma Care*

**Monday July 25, 2011**  
**Fess Parker's DoubleTree Resort**  
**Santa Barbara, California**





## Santa Barbara Cottage Hospital's Multiple Trauma Symposium

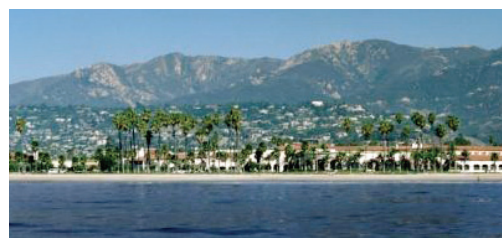
FOR PRE-HOSPITAL AND ACUTE CARE HEALTHCARE PROVIDERS

### Intended Audience and Course Description

The intended audience includes physicians, nurses, pre-hospital personnel and other healthcare providers. This course is designed for the presumed, expressed, and demonstrated needs of these healthcare providers. The educational subjects will help these individuals to understand better the treatment and management of seriously injured patients.

### Educational Objectives

- Apply knowledge gained and lessons learned when providing quality trauma care in practice settings.
- Discuss management, technology and techniques for optimal care of diverse trauma-related issues.
- Describe state-of-the-art management of diverse trauma-related issues.
- Present data-based evidence to compare and contrast pre-hospital and clinical care.



### Schedule 7:00 am – 5:15 pm

7:00-8:00 am **Registration, Vendor Fair, Breakfast**

*Session One: Critical Care With Injury and Response.*  
Moderator: Angelo Salvucci, MD

8:00-8:05 am **Welcome: Stephen Kaminski, MD**  
8:05-8:15 am **Opening Remarks: Ron Werft, CEO**  
8:15-8:40 am **Who is a Trauma Patient?: Marc Eckstein, MD**  
8:40-9:05 am **Trauma Transport: Dave Duncan, MD**  
9:05-9:30 am **Field Trauma Treatment: Dan Davis, MD**  
9:30-9:50 am **Panel Discussion**  
9:50-10:15 am **Vendor Fair / Break**

*Session Two: Critical Care is a Concept Not a Location.*  
Moderator: Stephen Kaminski, MD

10:15-10:40 am **Military Acute Critical Care: DJ Green, MD**  
10:40-11:05 am **Damage Control Resuscitation: Mike Sise, MD**  
11:05-11:30 am **Damage Control Surgery: Javier Romero, MD**  
11:30 am-12:00 pm **Panel Discussion**  
12:00-12:30 pm **Vendor Fair / Break / Boxed Lunch**  
12:30-1:30 pm **Could Trauma Center Care have saved Robert F. Kennedy?: Mark Eastham, MD**

*Session Three: Critical Care in the ICU.*  
Moderator: Jeffrey Sager, MD

1:30-1:55 pm **Monitoring - Do We Need the Invasion?: Jeffrey Fried, MD**  
1:55-2:20 pm **Hypothermia Update: Not Just For Cool Kids. Muhammed Jaffar, MD**  
2:20-2:45 pm **Evolving Pulmonary Concepts in Acute Care: Nader Habashi, MD**  
2:45-3:05 pm **Panel Discussion**  
3:05-3:30 pm **Vendor Fair / Break**

*Session Four: Who Critically Cares for the Old and Cold?*  
Moderator: Maggie Kademian, MD

3:30-3:55 pm **Pediatric Critical Care Update: Rick Lehman, MD**  
3:55-4:20 pm **Geriatric Care: David Spain, MD**  
4:20-4:45 pm **Giving Bad News to Patients' Families: Mike Sise, MD**  
2:45-3:05 pm **Panel Discussion**  
3:05-3:30 pm **Final Remarks / Raffle**

**Adjournment: Stephen Kaminski, MD**

*Schedule subject to change*

### About Santa Barbara Cottage Hospital

With annual admissions of more than 19,000 patients, 42,000 ER visits, and 2,600 births, Santa Barbara Cottage Hospital is renowned for its comprehensive pediatric, trauma, cardiac, neuroscience, and oncology programs. SBCH is an ACS verified Level II Trauma Center, with over 1,700 trauma patients annually. Responding to trauma emergencies from Monterey to Ventura counties, our Trauma Center is the only comprehensive trauma center between LA and San Jose.

### About the Resort

Located in Santa Barbara, Fess Parker's DoubleTree Resort is minutes from specialty boutiques, cafes and Stearns Wharf. Nearby attractions include celebrated wineries, the Santa Barbara Mission, the zoological gardens and museums. The hotel is 20 minutes from the airport.

### Accommodations:

A block of guest rooms has been reserved at a special conference rate of \$179 plus taxes and fees. To receive this rate, mention the CHS Multiple Trauma Symposium Critical concepts in Trauma Care. **Information/Reservations: Breanne Szabados at 805-884-8568 or 877-893-0892.**

Overnight parking fees apply to registered hotel guests. Complimentary valet parking is provided for those attending the conference who are not registered guests.

### Registration:

Send a completed registration form along with check made payable to CHS Trauma Services or register online at [www.sbch.org/TraumaSymposium.aspx](http://www.sbch.org/TraumaSymposium.aspx)

### Driving Directions

From San Francisco & San Luis Obispo County

- Take Highway 101 South to Santa Barbara.
- Exit at Milpas Street and turn right onto Milpas.
- Turn right onto Calle Puerto Vallarta.
- The hotel entrance is the first on the right.

From Los Angeles & Ventura County

- Take Highway 101 North to Santa Barbara.
- Exit at Milpas Street, turn left onto Milpas and right onto Calle Puerto Vallarta.
- The hotel entrance is the first on the right.

## Santa Barbara Cottage Hospital's Multiple Trauma Symposium

July 25, 2011 • 7:00 am–5:15 pm

Fess Parker's DoubleTree Resort Santa Barbara

Name: \_\_\_\_\_

Address: \_\_\_\_\_

City: \_\_\_\_\_

State/Zip: \_\_\_\_\_

Phone: \_\_\_\_\_

Employer/Dept.: \_\_\_\_\_

License & Number: \_\_\_\_\_

### Register early. Space is limited.

MDs:	\$150
CHS Staff	\$120
Non-CHS Staff	\$130
Tuition at the door:	\$150

Make checks payable to CHS Trauma Services.  
Send registration form and payment to:  
Cottage Health System Trauma Services  
PO Box 689  
Santa Barbara, CA 93102-0689



**Accreditation Statement:** The **Santa Barbara County Consortium for CME** is accredited by the Institute for Medical Quality/California Medical Association (IMQ/CMA) to provide continuing medical education for physicians. The **Santa Barbara County Consortium for CME** takes responsibility for the content, quality and scientific integrity of this CME activity. The **Santa Barbara County Consortium for CME** designates this educational activity for a maximum of 7.5 *AMA PRA Category 1 Credit(s)*<sup>™</sup>. Physicians should only claim credit commensurate with the extent of their participation in the activity. This credit may also be applied to the CMA Certification in Continuing Medical Education.

Provider #00252: 7.5 Contact Hours by the California Board of Registered Nurses  
Provider #427000: 7.5 Continuing Education Hours for EMT-P  
Provider #420700: 7.5 Continuing Education Hours for EMT

Cancellations will be accepted before 7/21/11. Participants who cancel after 7/21/11 or are a "no show" will be charged the full amount. If you would like to register within two weeks of the course or have not received a confirmation letter prior to the course, please contact Trauma Services for space availability.